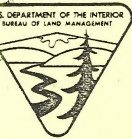
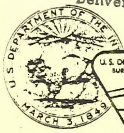


GENERAL FIELD USE

Technical Note 156 84.2
5700 .L 35
P712b no. 156

BLM Library DEPARTMENT OF THE INTERIOR
D-553A, Building 80 BUREAU OF LAND MANAGEMENT
Denver Federal Center PORTLAND SERVICE CENTER
P. O. Box 23647 P. O. Box 3861
Denver, CO 80225-0047 Portland, Oregon 97208

ID: 86013225



April 5, 1968

PORCUPINE BAIT STATION

The control of porcupines is frequently a necessary forest development practice. This is particularly true in areas where pine species are of major importance. One control method found to be successful in controlling porcupines is poisoning with strychnine treated salt blocks attached to "stations."

First attempts at station construction utilized masonite, plywood, or lumber. Extensive use of these materials has produced an impressive list of deficiencies on their behalf (fig. 3).

This note describes an improved station constructed of aluminum half-round culvert as shown in Figure 1.

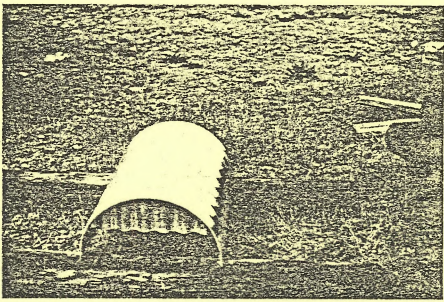
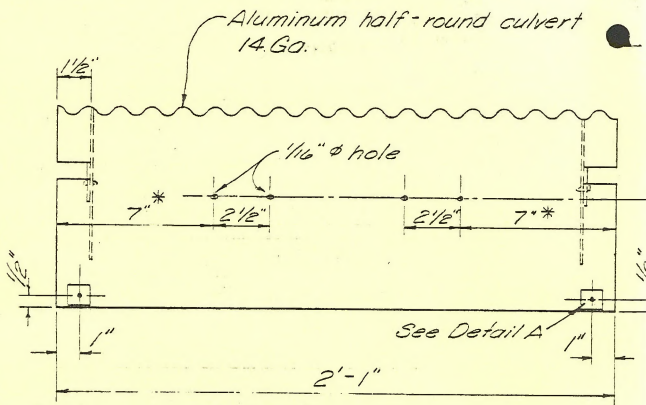


Figure 1 - Aluminum Bait Station

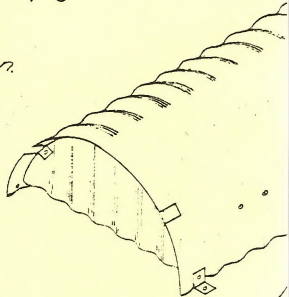


SIDE ELEVATION
Scale: 3" = 1'-0"

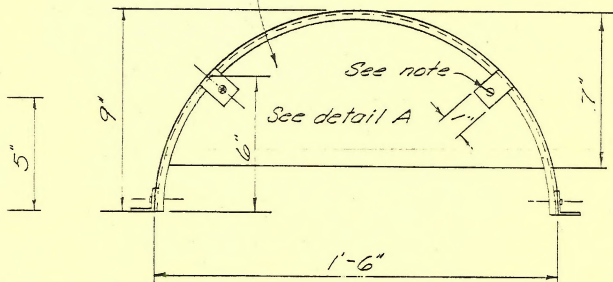
NOTE: Aluminum screws and nails shall be used in fabrication. Fasten unit to railroad ties or similar material. Decadent logs should not be used.

* Measurement shall vary as needed to locate holes on ridges or in valleys of corrugation.

NOTE: Drilling of 1/16" ϕ hole in tab and bulkhead should be done in one operation to insure proper alignment.

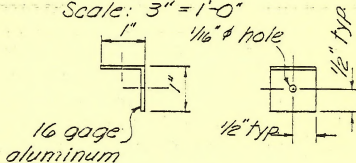


14 Ga. Aluminum corrugated sheet - both ends.



END ELEVATION

Scale: 3" = 1'-0"



DETAIL A (4 required)

Scale: 6" = 1'-0"



ISOMETRIC VIEW

U. S. DEPARTMENT OF THE INTERIOR
BUREAU OF LAND MANAGEMENT

PORCUPINE CONTROL CYLINDER

DESIGNED _____	RECOMM. <i>H. H. Hurlbut</i>
DRAWN <i>L. L. L.</i>	RECOMM. <i>C. J. Johnson</i>
CHECKED <i>W. M. M.</i>	APPROVED <i>H. H. Hurlbut</i> PSC CHIEF, DIV. OF ENG.

SCALE AS SHOWN	
DATE APRIL 1966	SHEET 1 OF 1
DRAWING NO. 36-11-6431-00-01 0007-01-01	

4-5-68	General Revisions
DATE	REVISION

Use of the Aluminum Bait Station gives the following advantages:

1. Life of the stations is lengthened since the aluminum will not deteriorate.
2. Salt blocks are better protected from the weather thereby reducing leeching.
3. Stations are very resistant to being crushed by snow, debris, large grazing animals.
4. Porcupines will not damage stations by gnawing.
5. Stations are easily deployed due to their light weight and the ease with which several may be stacked together.
6. The stations are more economical due to their greater lifetime.
7. Chances for accidental poisoning of game animals and livestock is reduced by the station's durability.

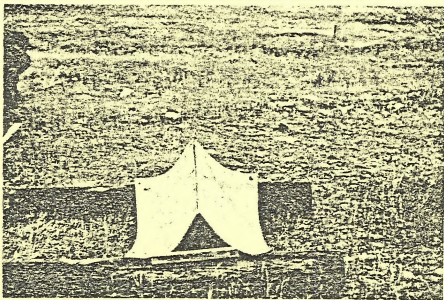


Figure 3 - After three years in the field this station is typical of wood and masonite construction.